

# Injury Management Services

---

**Rest assured.**

**We do the hard work in managing your injured workers, so you can focus on your business.**



We reduce injury costs for Australia's largest businesses, SME's and organisations.



# Injury management: specialist services

---

**From as little as \$160 per week for a full professional team for all types of injuries and all jurisdictions we coordinate the following elements:**

- › immediate post-injury treatment, including specialist if required
- › liaise with the injured worker
- › communicate with doctors
- › facilitate the return to work processes
- › provide direction to site personnel on their involvement
- › initiate or defend workers' compensation claims process
- › maintain appropriate documentation
- › identify, advise on and mitigate additional injury risk exposures
- › attend file reviews and all directorate hearings.

## **We provide the following:**

- › best practice policies and procedures which will respond in all jurisdictions
- › the best possible care to employees
- › highly specialised clinical and technical experts representing the employer
- › development of return to work plans in accordance with the law
- › identification and mitigation of injury risk exposures arising from work-related and non-work-related injuries and illness
- › early intervention to maximise return to work outcomes and minimise lost time
- › expert management influence over third-party providers to control additional costs
- › innovative solutions to address difficult cases
- › advice on compliance requirements of workers' compensation legislation, thorough understanding of and protection from fines and penalties that could result from non-compliance
- › reduced claims costs by expert management = positive results for brokers when negotiating premiums.

# We take control, we are on your side

---

**In addition to the detailed managed services above, we also offer the following options.**

## **One-off claims management**



If you are having a challenging time negotiating a workers' compensation claim, we can be appointed (at any time) to provide high level strategic advice and options to regain control.

## **Strategic advice role**



We will oversee and mentor your team to provide strategic advice as claims develop. We perform an advisory role rather than full implementation.

## **Training**

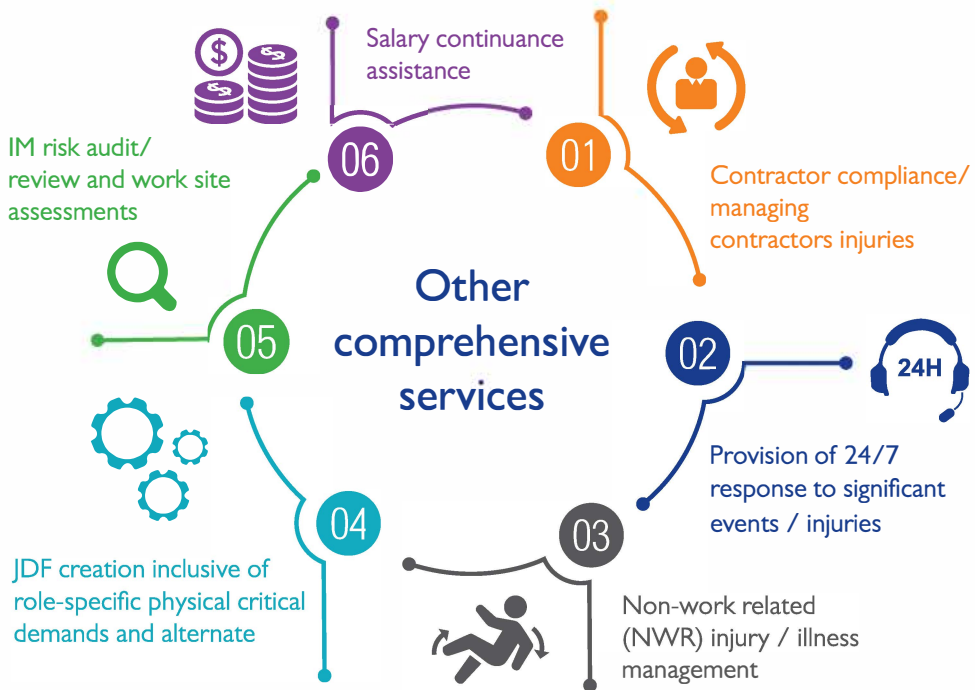


As a Registered Training Organisation (RTO), we are one of only two organisations in WA accredited to run the Injury Management Coordinator course.

## **We are on your side**



We partner with your business to provide low cost review of Pre Employment Medical application or medical review to assess the risk of WC claim if employed.



“Aurenda immerse themselves into our company and our culture and that is unique. Highly professional and responsive, they challenge us and continually develop our capability to manage OSH and Workers’ Comp matters. They provide peace of mind, in that we have specific expertise to draw on and which supports us, which is absolutely critical in a complex and high risk business like ours.

We have a very close partnership and Aurenda have become part of our family. They provide us with a great team of people with specialist knowledge and have significantly reduced our costs in more than 14 years of working together, increased our internal knowledge and skills in OSH and consistently provide processes and procedures that increase our efficiency and our internal skills.

Aurenda act as an advocate for us, challenge the status quo and are ahead of the game. The Level of service and attention to detail is unprecedented and it has to be experienced, in order to appreciate the true value. Great people to work with!” **Gordon Trewern - CEO, Nulsen**

**Let’s talk about how we can help you.**

**Aurenda**  
BECAUSE INJURY COSTS

Telephone | +61 (8) 6389 8900  
Address | 136 Stirling Highway Nedlands WA 6009  
Postal | PO Box 1012 Nedlands WA 6909

**Aurenda.com**